

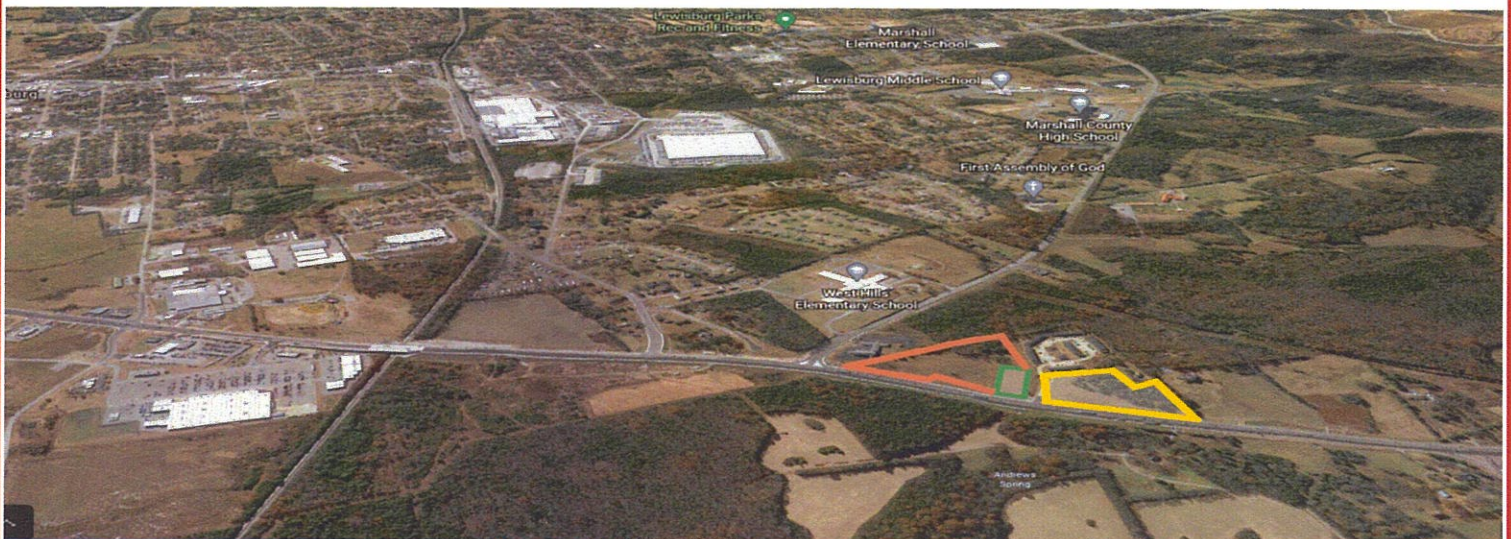
**ABSOLUTE AUCTION**  
**12.44 +/- acres in 3 Tracts**

**Saturday, September 26, 2020 – 10:00 a.m.**

**Sale location:**  
**1427, 1429 & 1435 New Columbia Hwy.**  
**Lewisburg, TN 37091**

**DIRECTIONS:** From I-65 South, take Exit 37, turn left onto TN-50 (New Columbia Hwy.), continue onto TN-50 approximately 6.3 miles. Property is on the right. From Lewisburg, take N. Ellington Pkwy, continue onto New Columbia Hwy., property is on the left just past W. Ellington Pkwy. intersection.

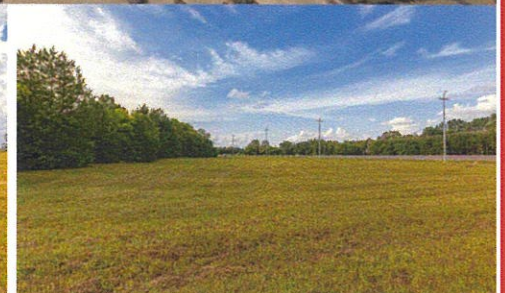
**3 Tracts of Land Located At:**  
1427 New Columbia Hwy. 6.5 +/- Acres  
1429 New Columbia Hwy. 1.20 +/- Acres  
1435 New Columbia Hwy. 4.74 +/- Acres  
Zoned commercial  
Water, sewer & electric is available



1427 New Columbia Hwy 6.5 +/- Acres  
785 sq. ft. road frontage



1429 New Columbia Hwy. 1.20 +/- Acres  
151 sq. ft. road frontage



1435 New Columbia Hwy. 4.74 +/- Acres  
656 Sq. ft. road frontage

**TERMS: 20% down day of sale, balance due on or before October 26, 2020**  
**Announcements day of the sale take precedence over previous announcements or advertising**

**Grover Collins**  
**REAL ESTATE & AUCTION, INC.**



**Phone 931-359-6231—www.grovercollins.com**  
**1103 Nashville Highway—Lewisburg, TN 37091**  
**State Auction Firm #7**



**Agents: Grover Collins, #173; Matt Collins, #4425; Andy Collins; Chris Collins;**  
**Jason Terry; Joe Liggett, #2068; Wickey Gower**